



RINOX

www.rinox.ca



**LANDSCAPING
PRODUCTS**

**OUTDOOR
LIVING
IDEAS**

TO EACH HIS HOME...

CONCRETE PRODUCTS MANUFACTURER



To each his home...

*The world of concrete products has seen tremendous growth over the past decade. The increasing popularity of concrete products such as pavers, walls, stone, thin stone and concrete fireplaces has allowed Rinox to outshine the competition with its four lines of innovative products. All of these products have been created with great care, having been inspired by the beauty of nature. **With Rinox, you need to search no more; we have everything to suit your concrete product needs at every step of your project.** Our products are of superior quality with vivid colors which harmonise perfectly with nature and with your home's décor.*

History

- 1998** Rinox Plant opens in Terrebonne, Quebec.
- 1999** Introduction of the first two-sided wall system and the patented K-BLOCK system exclusive to the Rio Block.
- 2003** The birth of the Lugano Stone, to this day the closest imitation of natural stone.
- 2004** The acquisition of Betcon SM Inc. by the Rinox Group in order to have a complete line of residential and commercial bricks.
- 2005** Introduction of Rinox's Alternative Masonry collection.
- 2006** The creation of the Tomboro system to give Rinox pavers an old, unique and tumbled look.
- 2007** The new fireplace mantle collection entitled Architectural Detail comes to life expanding the Rinox product horizon.
- 2008** The introduction of the Avila and Arizona pavers, the Romania Brick and the Kenya and Capitale stones.
- 2009** After investing in our Majeska manufacturing facility, we are now one of the most advanced manufacturing facilities for Alternative Masonry products in North America. Also in 2009, Rinox introduced the Phenix and Geolo pavers, Trinity wall, Champlain brick and Capitale stone, positioning Rinox amongst the leaders in new product development and innovation.

Thank you for your continued support...



President, RINOX Inc.



Rinox recycles its manufacturing by-products by crushing them for future use as screening for landscaping projects or as base stone for construction of our roads here in Quebec. A portion of our products are manufactured with 35% POST CONSUMER RECYCLED MATERIALS. This is yet another way that Rinox contributes to the conservation of our planet!



Giving back to the Community

RINOX GOLF TOURNAMENT

The second edition of our golf tournament which was held on August 26th 2009 at Club de Golf le Portage was a huge success. We would like to thank all of the participants and sponsors for having made this a truly memorable day for the Rinox Group. The tournament gathered over 160 golfers and volunteers and we raised over \$17,000 for the Club des Petits Déjeuners du Québec. Thank you to all those who helped make this event possible! See you next year...



au profit du
 CLUB DES PETITS
DÉJEUNERS DU QUÉBEC
www.clubdespetitsdejeuners.org



CALME-TOI MON COCO !

Rinox is proud to join major sponsors such as La *Fédération des producteurs d'œufs du Québec* in the promotional campaign "*Calme-toi mon coco*". This campaign was founded with the goal of countering the effects of verbal abuse towards young athletes playing Little League **Hockey** and **Soccer** throughout Quebec. This is a serious and growing problem in our athletic community and Rinox is proud to support this good cause.



Contents

Landscaping

IDEA SECTION

P. 7 OUTDOOR LIVING

PRODUCTS SECTION

P. 42 NEW PRODUCTS

PAVERS

P. 44 PALAZZO

P. 45 BOLERO

P. 46 RIBERA

P. 47 BELAIR

P. 48 TREVIA

P. 49 NORWAY

P. 50 SPHERIK

P. 51 BELMONT

P. 52 AVILA

P. 53 ARIZONA

P. 54 PHENIX

P. 55 GEOLO

CIRCLES

P. 56 BELAIR

P. 57 REVERSIBLE

WALLS

P. 58 RIO 90

P. 59 RIO 135

P. 60 STEP AND COPING

P. 61 COLUMN

P. 62 MONTANA

P. 63 GARDEN

P. 64 TALUS

P. 65 TRINITY

TILES

P. 66 ATLANTIC

P. 66 DIAMOND

P. 67 FAUBOURG

P. 68 ARDOISE

P. 69 PORTO

PATH STONES

P. 70 JAPANESE PATH STONE

P. 71 PATH STONE

P. 72 GARDEN PATH STONE

P. 73 RINO-BLOC

P. 74 MULTI-BLOC

P. 75 BORDERS

P. 76 COLOR CHART

P. 78 TECHNICAL DETAILS



Discover the 3 other collections: Masonry,
Alternative Masonry and Architectural Detail...

REQUEST YOUR FREE CATALOG IN STORE
OR ON OUR WEB SITE AT WWW.RINOX.CA



Outdoor Living

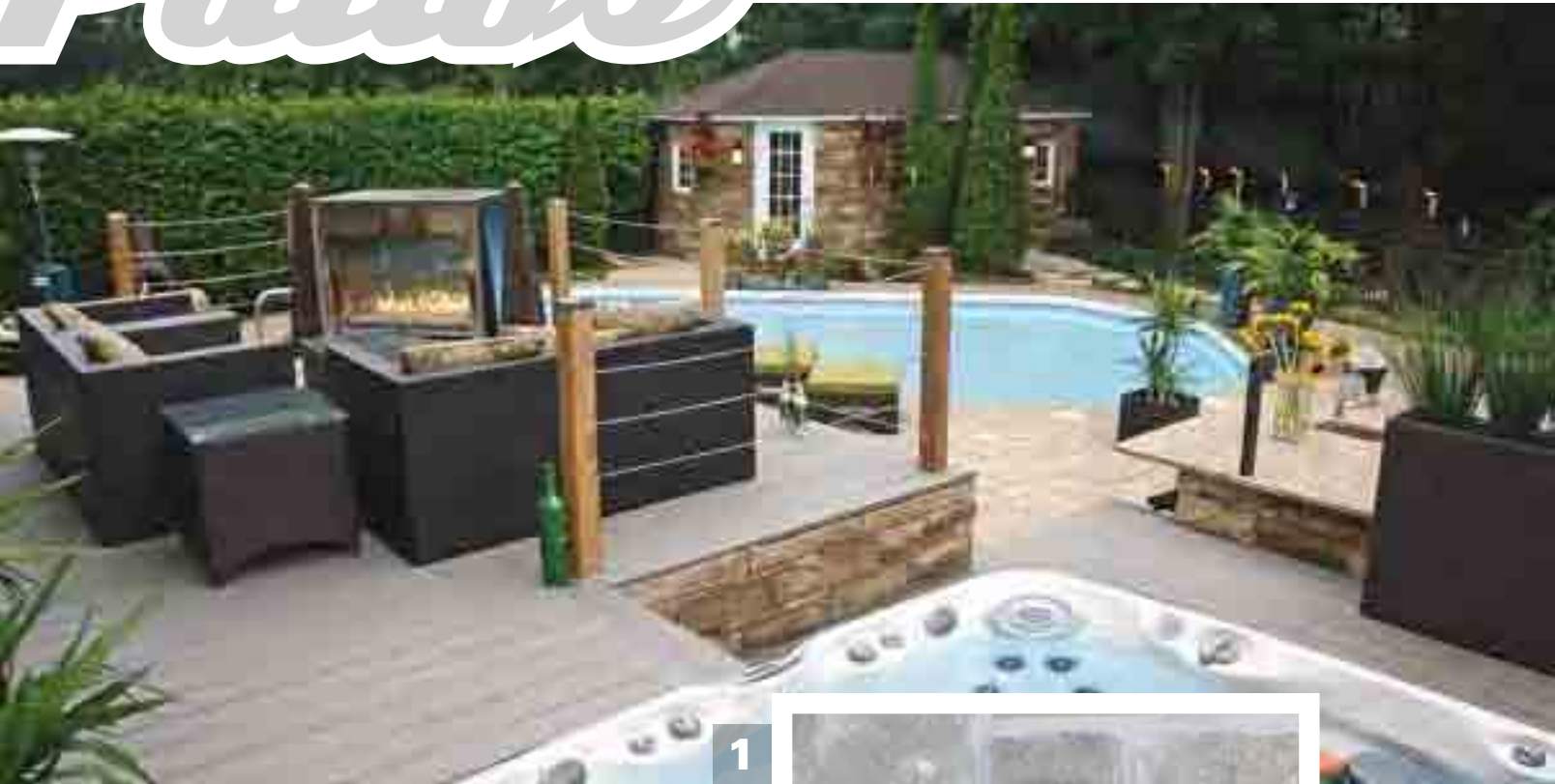
In the Outdoor living section you will find plenty of ideas to make the exterior of your home your little place of heaven. From your driveway to your patio, your garden to your exterior fireplace or kitchen, Rinox will have the perfect product for your tastes!





Rinox

Patios



2

1: Cappuccino Brown Kenya Stone and Ivory Beige Belair Paver
2: Ivory Beige Belair Paver and Rio Coping

Ivory Beige Belair Paver and Rio Coping



Patios



1 & 2: Morocco Beige Capitale Stone

Milton Charcoal Kenya Stone and Milton Grey Palazzo Pavers ▶

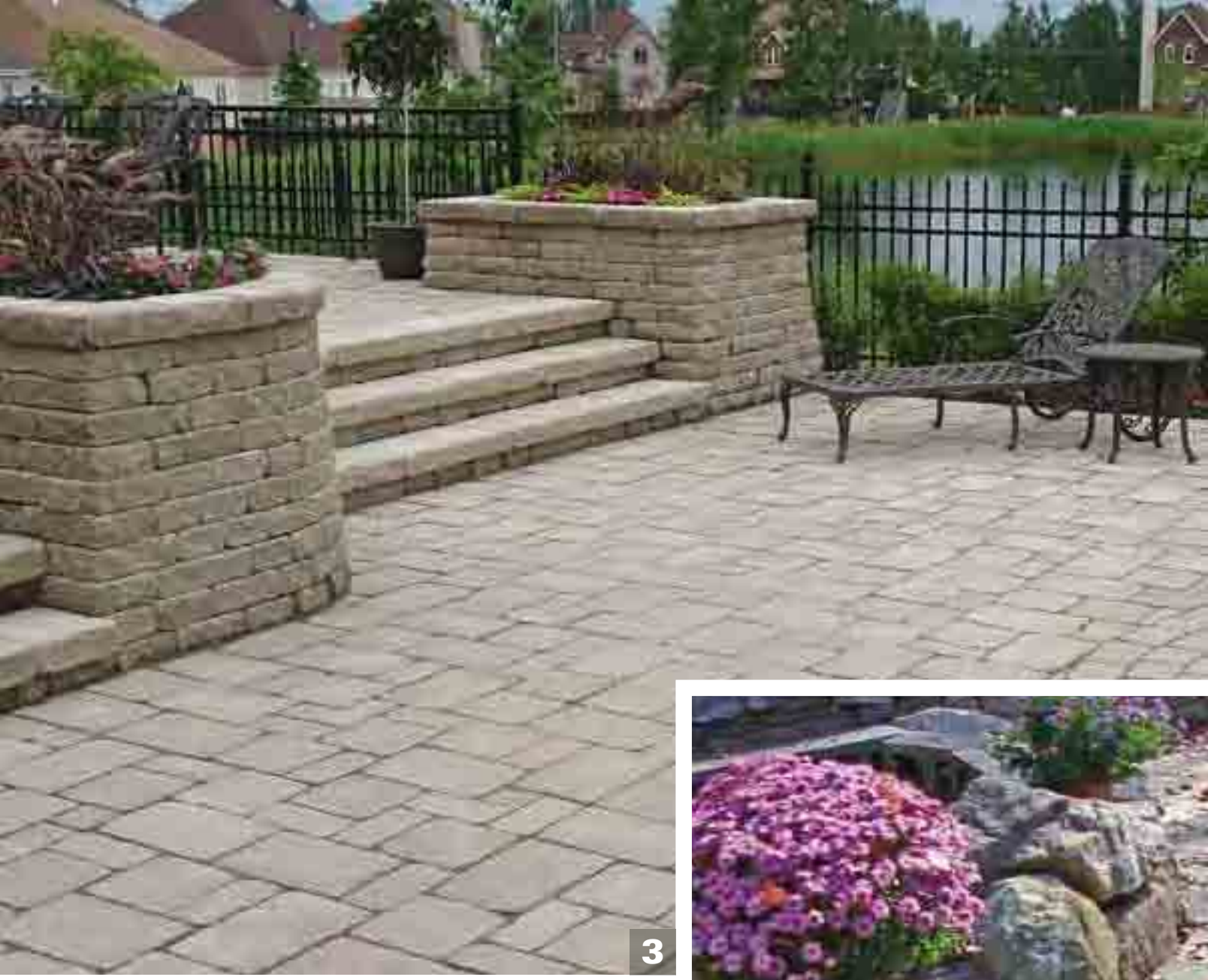


Patios



1: Ivory Beige Trevia 6x6 & 6x9 with Palazzo 9x9 insertions
2: Sealed Morocco Beige Palazzo Paver
3: Ivory Beige Rio and Belair Paver





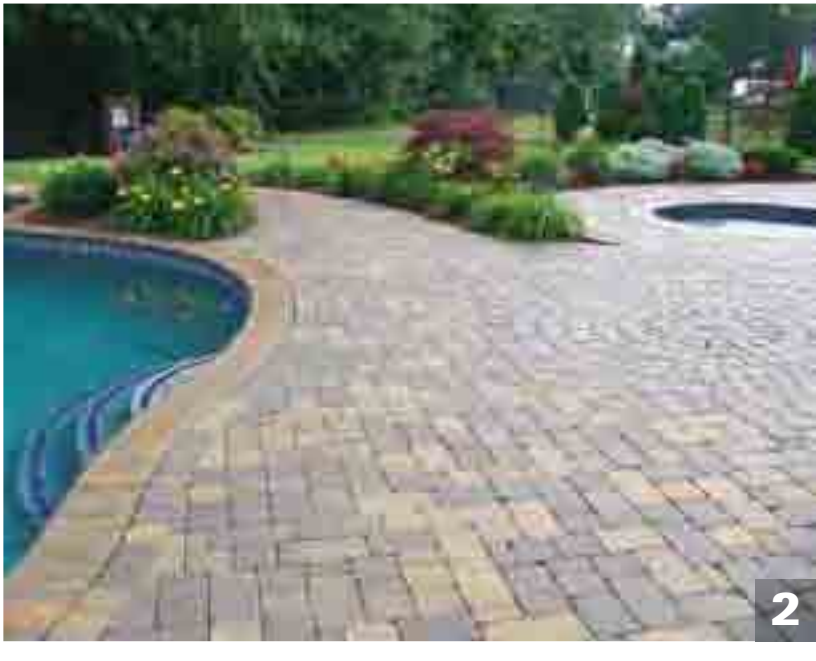
3



Pools



1 & 2: Milton Grey sealed Palazzo Paver, Spherik and Reversible Circle





Pools



2 & 3: Morocco Beige Belair and Ribera Pavers, Spherik and Rio Coping



Pools



2 **1 & 3:** Arizona Paver and Spherik
2: Ivory Beige Belair Paver

Sealed Milton Grey Palazzo Paver and Spherik



Pools



2

- 1: Sahara Beige Arizona Paver & Morocco Beige Spherik
- 2: Ivory Beige Ribber Paver and Spherik
- 3: Ash Charcoal Bolero Paver

Sahara Beige Arizona Paver & Morocco Beige Spherik



Pools



1 & 2: Ivory Beige Belair Paver,
Portobello Beige Japanese Path Stones
& Cappuccino Brown Kenya Stone



Driveways



2



1

- 1: Milton Grey Arizona Paver
- 2: Morocco Beige Trevia Paver with 9x9 Palazzo insertions

Sealed Milton Grey Palazzo Paver



Driveways



1

- 1: Ribera Paver Burgundy Wine & Morocco Beige with Ash Charcoal 9 x 9 borders
- 2: Ivory Beige Belair Paver

2

Milton Grey Palazzo Paver and Reversible Circle with Burgundy Wine Trevia Paver as a border



Gardens



2

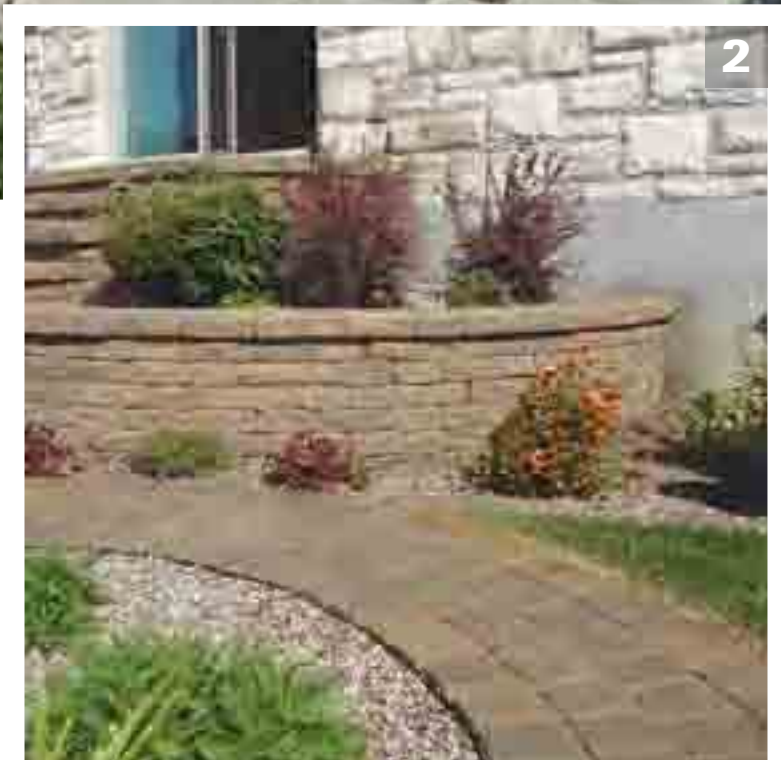
1

- 1: Sealed Milton Grey Palazzo Paver
- 2: Ivory Beige Rio 90 wall

Ivory Beige Rio 90 wall 



Gardens



2

1

- 1: Milton Grey Rio Coping
- 2: Sealed Morocco Beige Rio 90 wall

Portobello Beige Japanese Path Stone





Outdoor Fireplaces



1

1 & 2: Milton Grey Rio 90 Wall and Ash Charcoal Coping



2

Beige Nevada Path Stones



Walls



1

1: Sealed Morocco Beige Rio 90 Wall
2: Milton Grey Rio wall and Belair Paver



2

Milton Grey Rio 90 Wall and Grey Column Coping

Outdoor Kitchens



1 & 2: Cappuccino Brown Kenya Stone
3: Ivory Beige Belair Paver

Milton Charcoal Kenya Stone



Sheds



2

1

- 1: Cappuccino Brown Kenya Stone
- 2: Chablis Beige Lugano Stone

Lugano Stone





Landscaping Products

*Consult the following pages to discover the products
and colors that best suit your needs.
Get inspired by our complete line of landscaping products.
We have everything you are searching for to achieve your project.*





Rinox

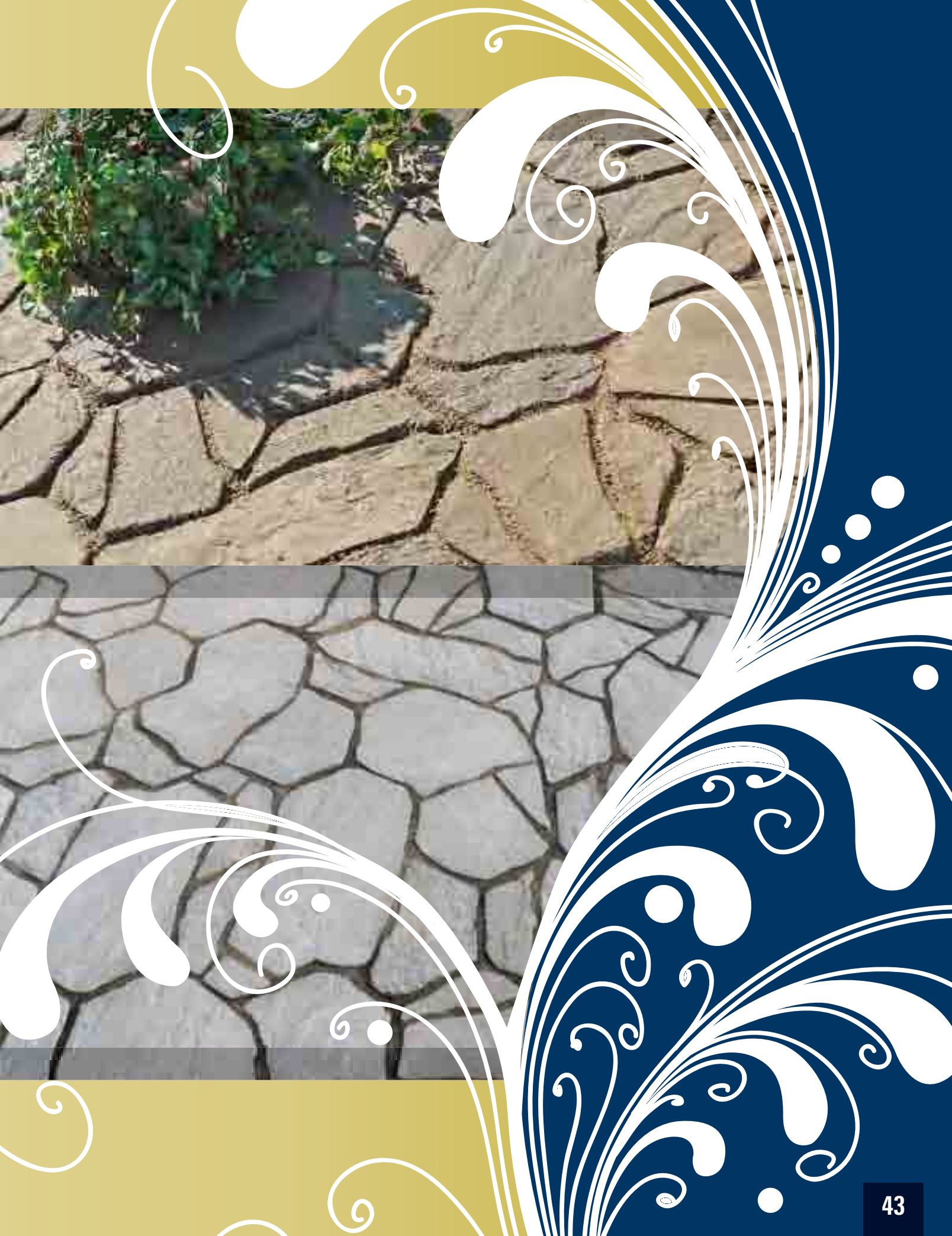


PRADO

PAVER



New Products




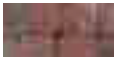

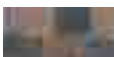
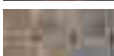



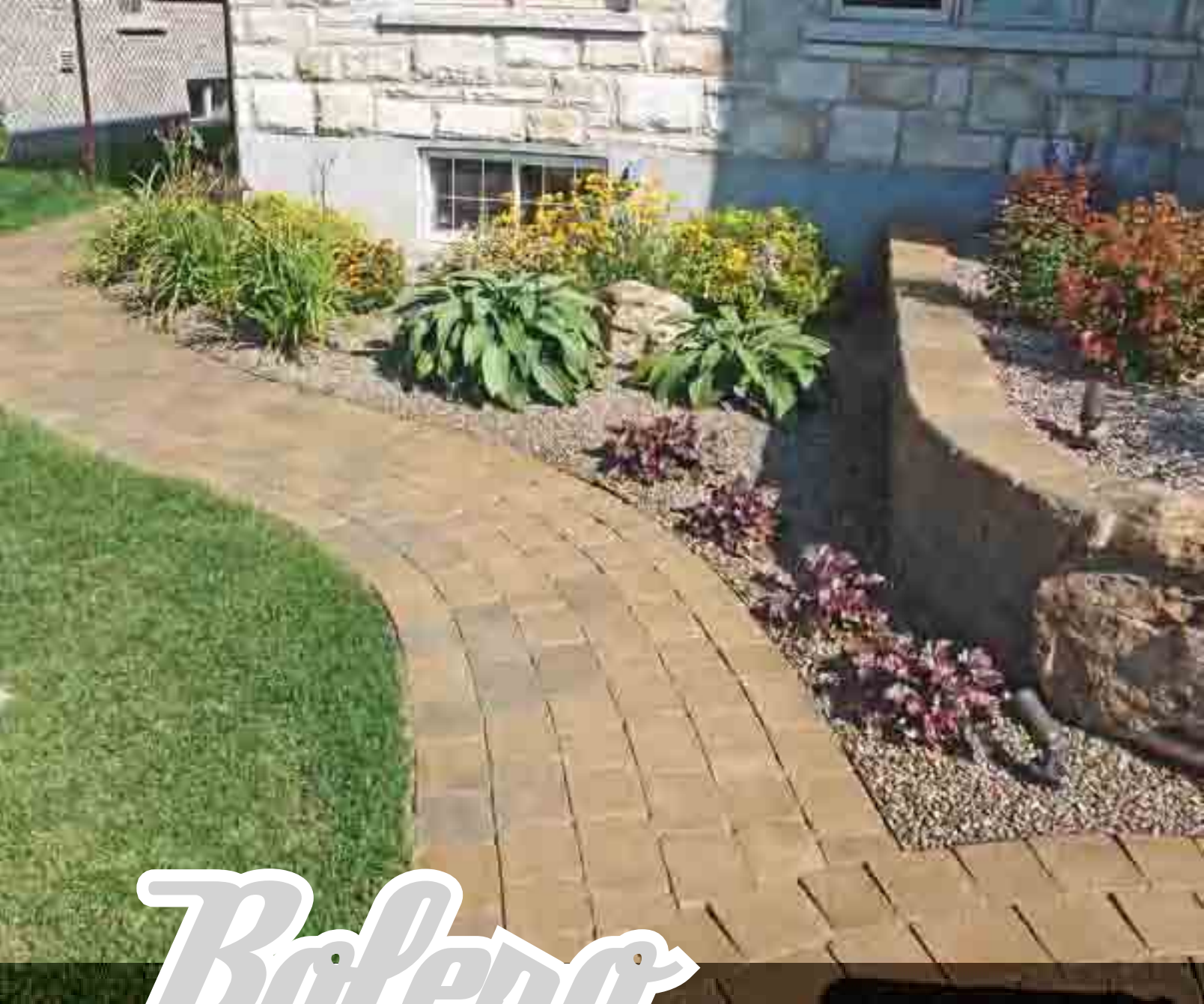
Palazzo

Sealed Milton Grey Palazzo Paver and Reversible Circle 

The Palazzo Modulo Paver is composed of four modular sizes but can be installed with two larger size modular insertions, to create a sophisticated look without the complex installation.

Available colors

-  Ivory Beige
-  Burgundy Wine
-  Morocco Beige
-  Panama Beige
-  Milton Grey
-  Ash Charcoal



Bolero

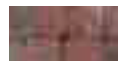
Sealed Morocco Beige Bolero Paver 

The Bolero Paver has four sizes and distinguishes itself from the other pavers in the Rinox collection due to its smooth surface. Its sizes and antique surface allow the Bolero to recreate a walkway or driveway inspired by older generations.

Available colors



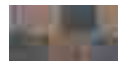
Ivory Beige



Burgundy Wine



Morocco Beige



Panama Beige



Milton Grey



Ash Charcoal


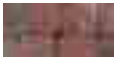

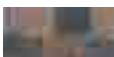
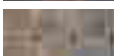




Ribera

Ivory Beige Ribera Paver 

The four sized Ribera Paver was the first to use the Rinox Linea system. This system ensures a tight fit between the pavers, all the while maintaining random spacing, which in turn creates an elegant pathway or driveway.

Available colors

-  Ivory Beige
-  Burgundy Wine
SPECIAL ORDER ONLY
-  Morocco Beige
-  Panama Beige
-  Milton Grey
-  Ash Charcoal
-  Champagne
SPECIAL ORDER ONLY



Belair

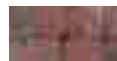
Ivory Beige Belair Paver and Rio Coping 

The Belair Paver is a three-piece modular system in an 80 mm height. With its rippled surface, colossal sizes and its 14 x 14 insertions, the Belair transform an ordinary driveway into an extraordinary project.

Available colors



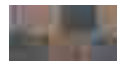
Ivory Beige



Burgundy Wine



Morocco Beige



Panama Beige



Milton Grey



Ash Charcoal



Champagne



Trevia

Trevia 6x6 and 6x9 Pavers with Palazzo 9x9 insertions 

*Available in 6 x 6 and 6 x 9 sizes,
the Trevia is a simple but attractive paver.*

Available colors



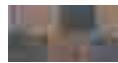
Ivory Beige



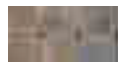
Burgundy Wine



Morocco Beige



Panama Beige



Milton Grey



Ash Charcoal

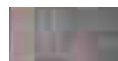


Norway

Grey Norway Paver 

*The Norway Paver is simple yet stylish and is easy to install.
The Norway is available in tumbled and non-tumbled finish.
This paver can also be used in a permeable installation,
similar to the Palazzo. It allows for 2" spacing and when installed
properly, it can contribute to the protection of our water sources.*

Available colors



Red and Black



Grey



Spherik

Ash Charcoal Spherik 

The Spherik is a bullnose shaped paver, with slip-resistant properties and rounded edges, great for the contours of in-ground pools. Throughout the years, this paver has taken on many other applications due to its appealing allure.

Available colors



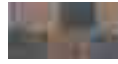
Ivory Beige



Burgundy Wine



Morocco Beige



Panama Beige



Milton Grey



Ash Charcoal



Belmont

BORDER

Panama Beige Belmont



Give the final touch to your landscape project with the Belmont Border. Available in the same colors as our other pavers, the Belmont's tumbled look creates an aesthetically appealing final touch to your project.

Available colors



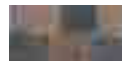
Ivory Beige



Burgundy Wine



Morocco Beige



Panama Beige



Milton Grey



Ash Charcoal

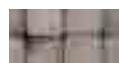


Avila

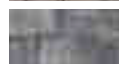
Ash Charcoal Avila Paver 

The Avila Paver series took its first steps this year and has been taking the market by storm. Inspired by the look of Old Montreal, this system of pavers is composed of three models, the Sabrina, the Diana and the much larger Clara. The three models of the Avila Series can be installed jointly to create the most complete modular paving system on the market.

Available colors



Morocco Beige



Ash Charcoal



Arizona

Milton Grey Arizona Paver 

The simplicity of the Arizona's texture and design is what differentiates it from the competition. It is available as a modular set of four large dimensional pieces, making it perfect for large surfaces.

Available colors

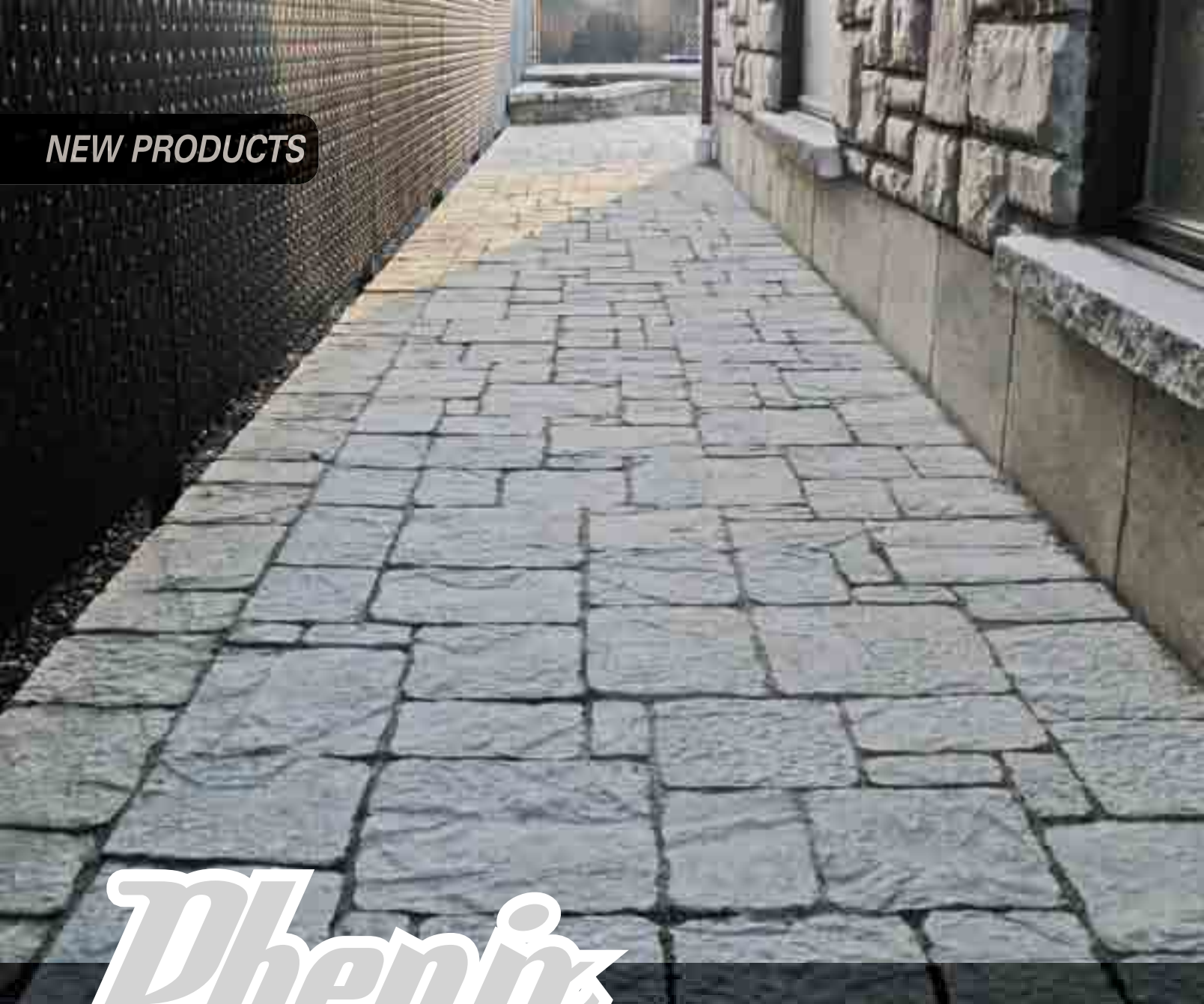


Sahara Beige
SPECIAL ORDER ONLY



Milton Grey

NEW PRODUCTS



Phenix

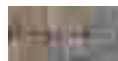
Ash Charcoal Phenix 

The Phenix is a paver so natural it's hard to imagine it's manufactured. With its assorted sizes the Phenix and Mega Phenix pavers are the perfect fit for any project from driveway to walkway.

Available colors



Morocco Beige



Milton Grey



Ash Charcoal



Champagne



Geolo

Beige Geolo 

The Geolo's simple shape and unique design make it one of the market's easiest permeable pavers to install. Its thickness also adds stability which is a necessity to any permeable or regular paver installation.

Available colors



Grey



Beige


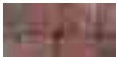

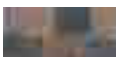
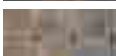




Belair

Ash Charcoal Belair Circle 

The Belair Circle is designed to be installed with our 80mm pavers. It can be used to highlight selected areas in a driveway or used independently to create unique patios.

Available colors

-  Ivory Beige
-  Burgundy Wine
-  Morocco Beige
-  Panama Beige
-  Milton Grey
-  Ash Charcoal
-  Champagne



Reversible

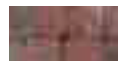
Milton Grey
Reversible Circle 

The Reversible Circle is perfect for installation with any 60mm Rinox paver. Its smooth or rippled surface certainly adds an edge to your landscaping project.

Available colors



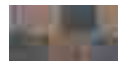
Ivory Beige



Burgundy Wine



Morocco Beige



Panama Beige



Milton Grey



Ash Charcoal



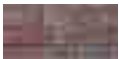

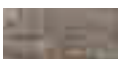
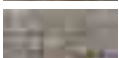
Rio 90

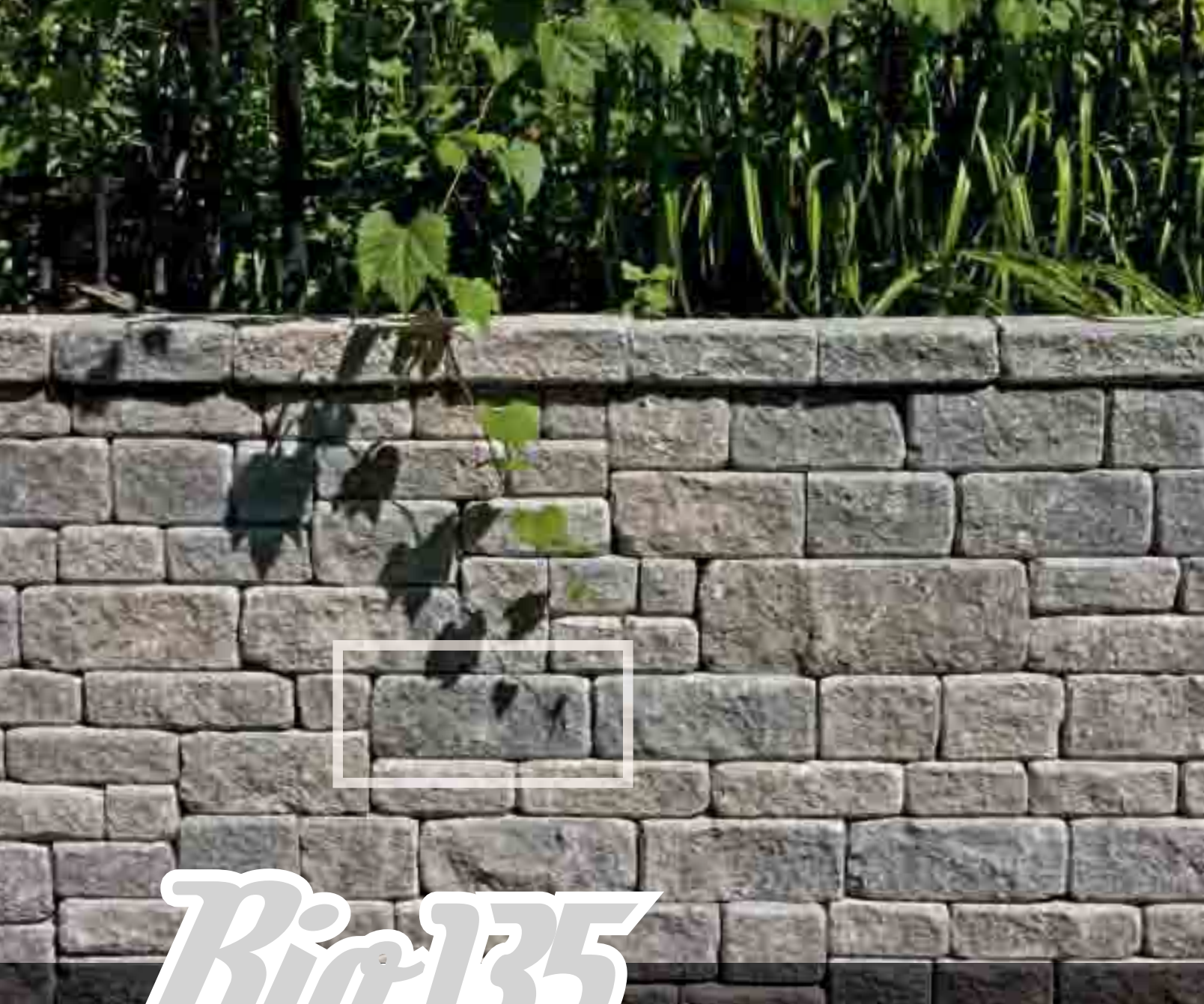
Ivory Beige Rio 90 

The Rio collection is unique in its design and its double-sided split surface. This retaining wall is appealing from all angles and can be used to create walls which are visible from front and back. It is available in three different heights 90, 135 and 180mm and utilizes our patented K-Block system in order to create curved and angled walls with ease like never before.



Available colors

-  Ivory Beige
-  Burgundy Wine
-  Morocco Beige
-  Panama Beige
-  Milton Grey
-  Ash Charcoal



Rio 135

Milton Grey Rio 90, 135 & Column



Available colors



Ivory Beige



Burgundy Wine



Morocco Beige



Panama Beige



Milton Grey



Ash Charcoal



Rio pillar

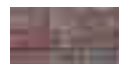
Morocco Beige Rio Pillar



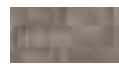
Available colors



Ivory Beige



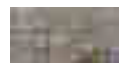
Burgundy Wine



Morocco Beige



Panama Beige



Milton Grey





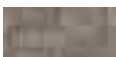

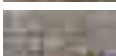

Ash Charcoal



Rio coping & step

Ivory Beige Rio Steps 

Available colors

-  Ivory Beige
-  Burgundy Wine
-  Morocco Beige
-  Panama Beige
-  Milton Grey
-  Ash Charcoal



10" Angle coping



13" Angle step



Garden wall

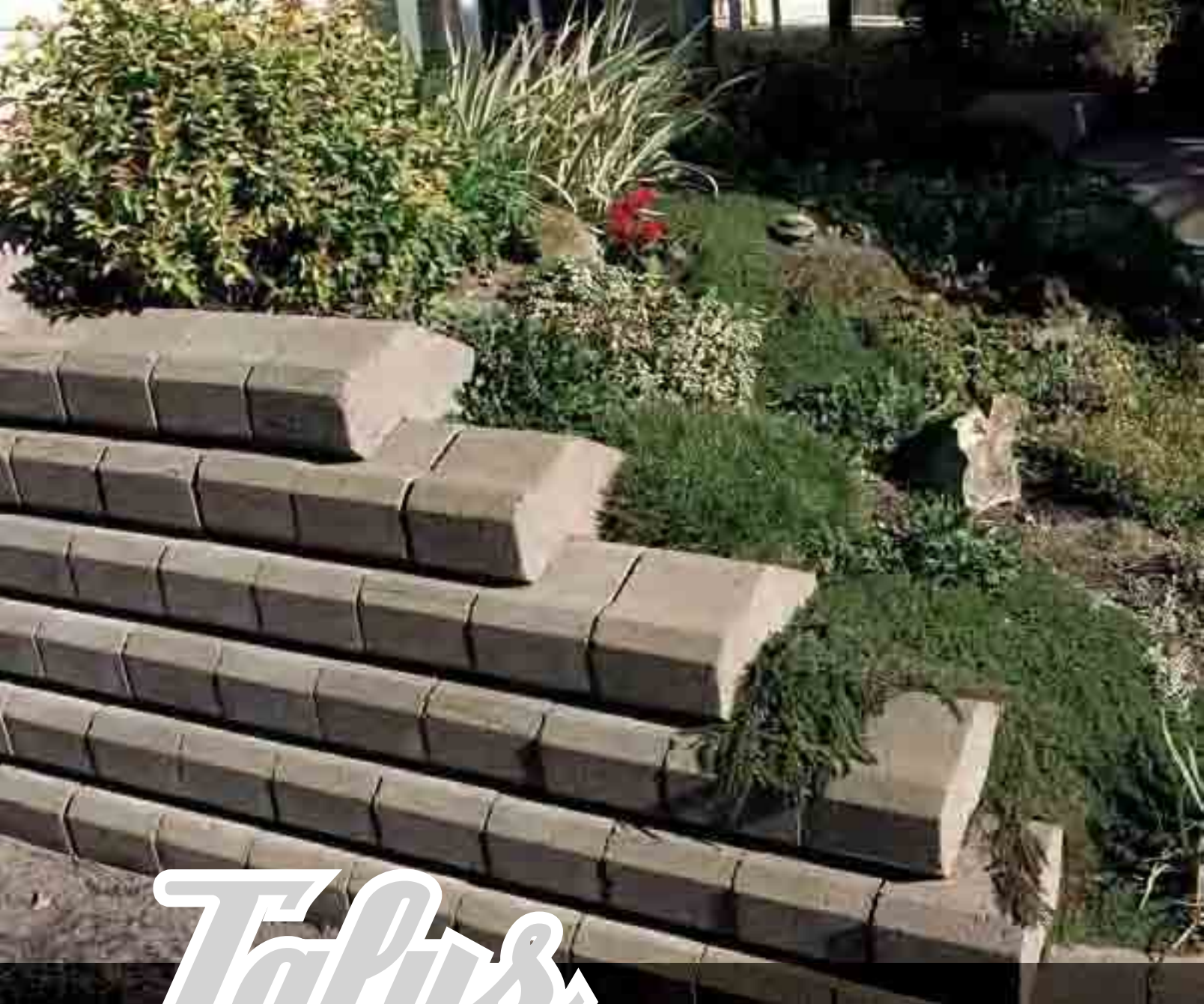
Beige Garden Wall 

Available colors

Natural Beige

Natural Grey





Talus

Grey Talus 

Available colors

Grey



Base

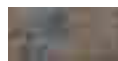


Trinity

Mohave Dawn Trinity Wall 

Developed by Rinox for commercial applications, the Trinity is everything required for segmental retaining wall projects. Its versatility allows the Trinity to extend to any height at which the user chooses to bring it to.

Available colors



Midnight Gold



Mohave Dawn



Charcoal Grey





Montana

Grey Montana 

Available colors



Beige



Grey



Atlantic



Diamond



Available colors

Diamond

Grey

Atlantic

Grey

Red & Black



Faubourg

TILES AND CIRCLE KIT

Beige Faubourg Circle Kit & Tiles



The Faubourg Circle is an easily installed kit for the do-it yourselfer that adds the finishing touches to any backyard. Sold as a kit or with individual 12 x 12" tiles, this product offers various options for easy installation.

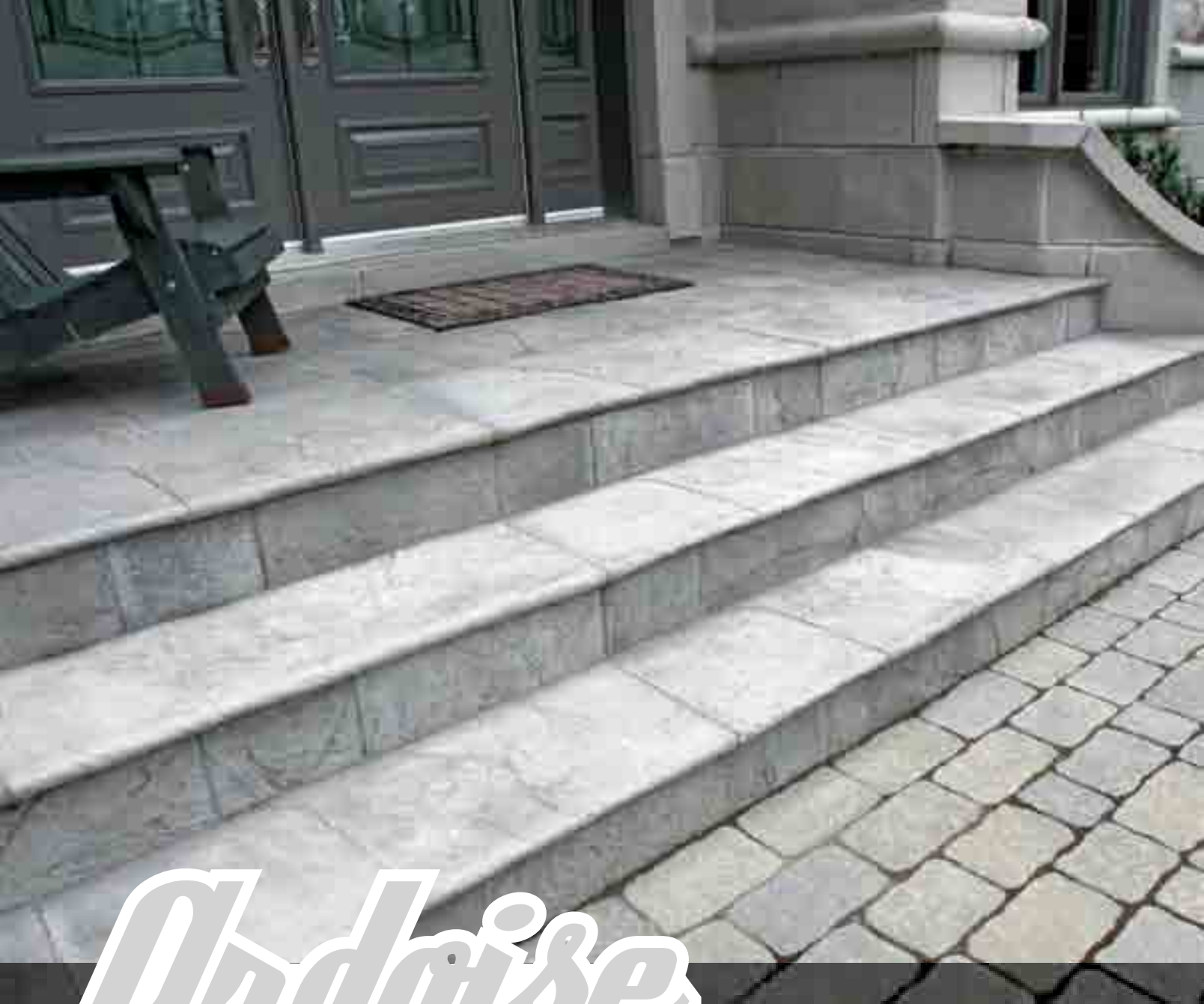
Available colors



Beige



Grey



Ardoise

Smoked Charcoal Ardoise Tile & Steps



The Ardoise Tile is available in three modular sizes and facilitates your installation using steps and risers.

Available colors



Beige Portobello



Smoked Charcoal



Porto

TILES AND PATIO KIT

Grey Porto Kit & Tiles



The Porto Patio Kit enables the creation of customizable patterns with the use of 12 x 12" tiles. Many different designs can be created using the Porto and the circular pattern can be widened or lengthened to suit your creative needs.

Available colors



Beige



Grey



Japanese

Portobello Beige Japanese Path Stone



These innovative path stones are large in size and closely resemble natural slate path stones. The many colors available harmonize with our landscaping and masonry products and they add that extra touch to your landscaping project.



Available colors



Portobello Beige



Marble Grey



Charcoal grey



Nevada

Beige Nevada Path Stones



The Nevada Path Stone is durable and smaller in size than the Japanese Stone. The beauty of the Nevada Stone is that the pieces can be installed closely together to create a patio-type setting or they can be installed loosely, allowing grass to grow between the pieces.

Available colors

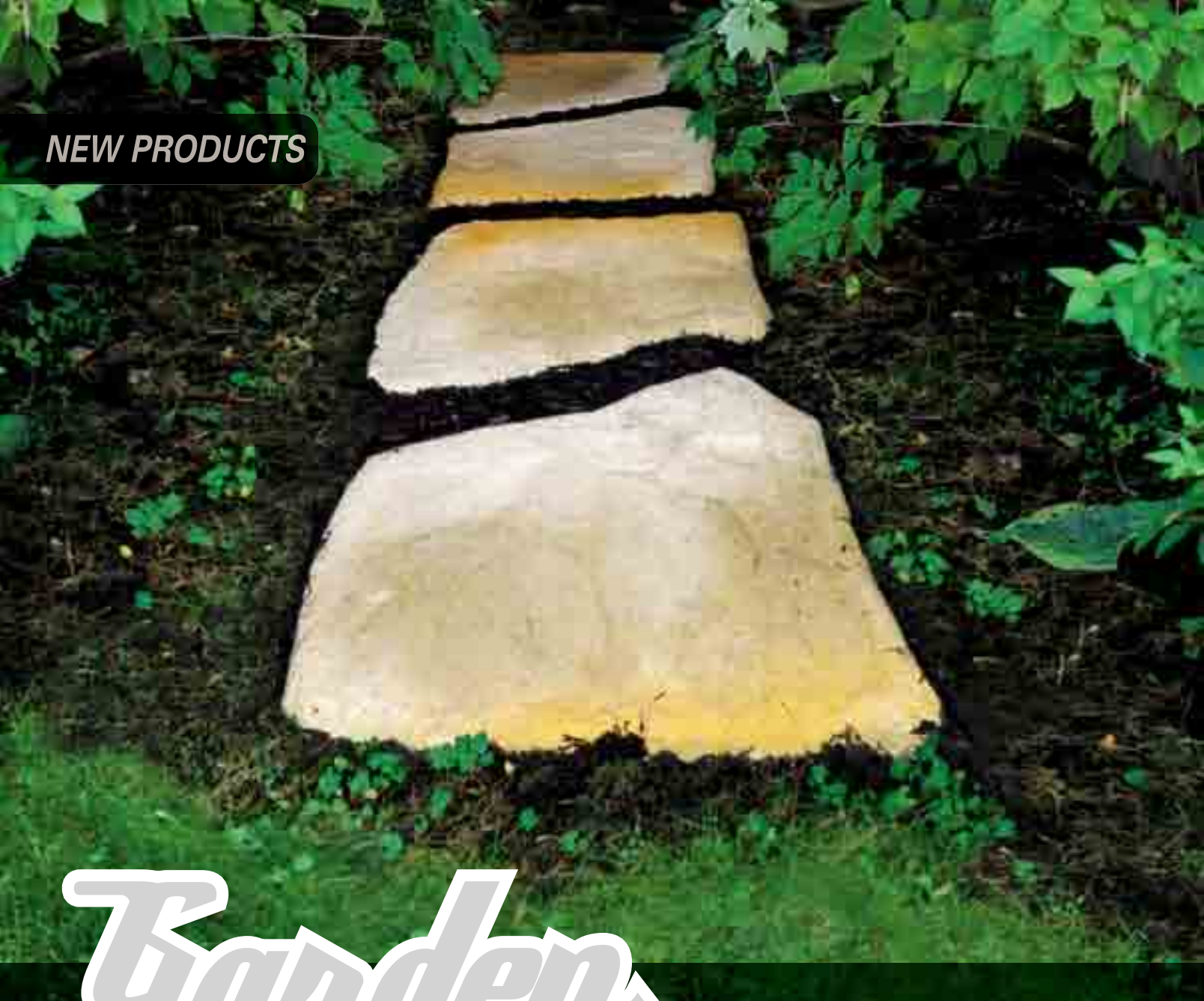


Beige



Grey

NEW PRODUCTS



Garden Path stone

Portobello Beige Garden Path Stones



The Garden Path stone has returned to Rinox's Landscaping collection. Its modified sizes have given the Garden Stone a more natural appearance and make it a popular choice for gardens and walkways.



Available colors



Portobello Beige



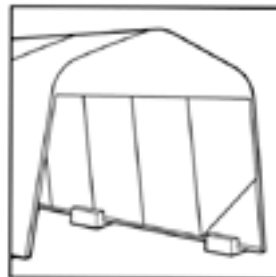
Marble Grey



Charcoal grey



Multi-bloc



Size

9 x 6 1/4 x 12"

230 x 160 x 305mm

W x L

40 lbs per block
48 pcs per skid



Rino-bloc

This block can be placed on the ground or on aggregate and does not need to be embedded. The hole in its center allows you to place the end of a sun parasol, install a fence or foundation for a wood deck. It has a space for securing planks of 2" x 4", 6", 8", 10" or 12".





Borders



Corner



Universal 8"



Radius



Econo 5"



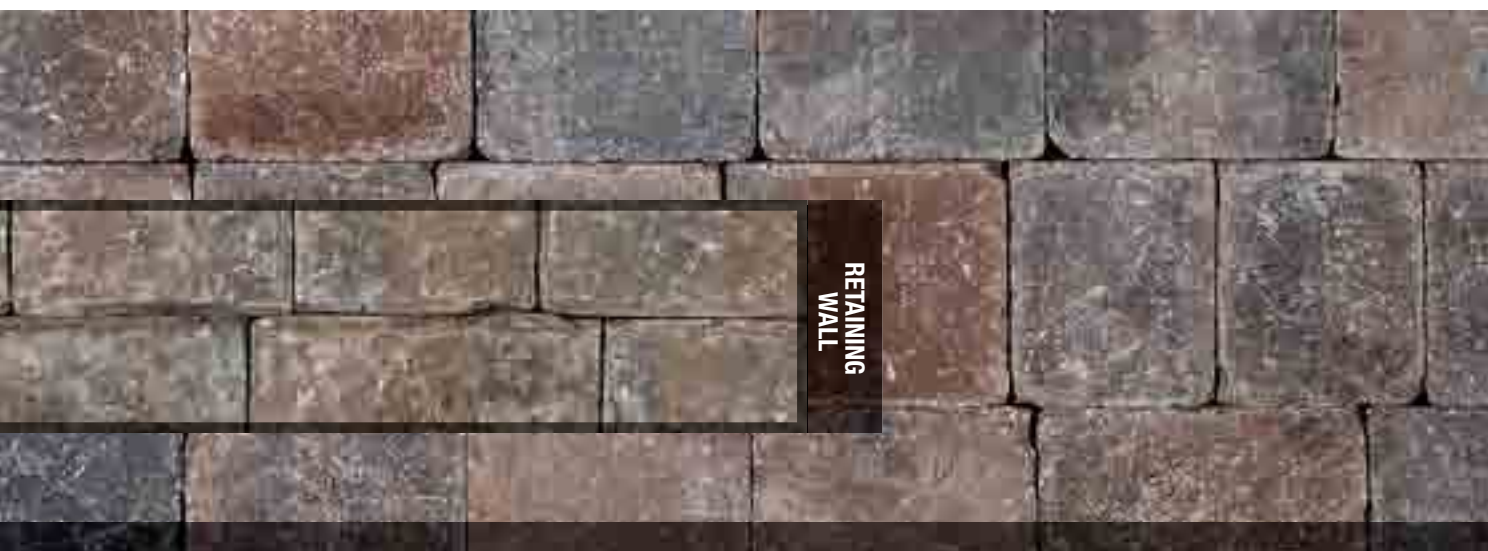
Zebra
SEE ILLUSTRATION ABOVE

MILTON GREY

The colors of the products shown are as accurate as the photographs and printing process will allow. We strongly recommend that color selection is made based on actual product samples.



PANAMA BEIGE



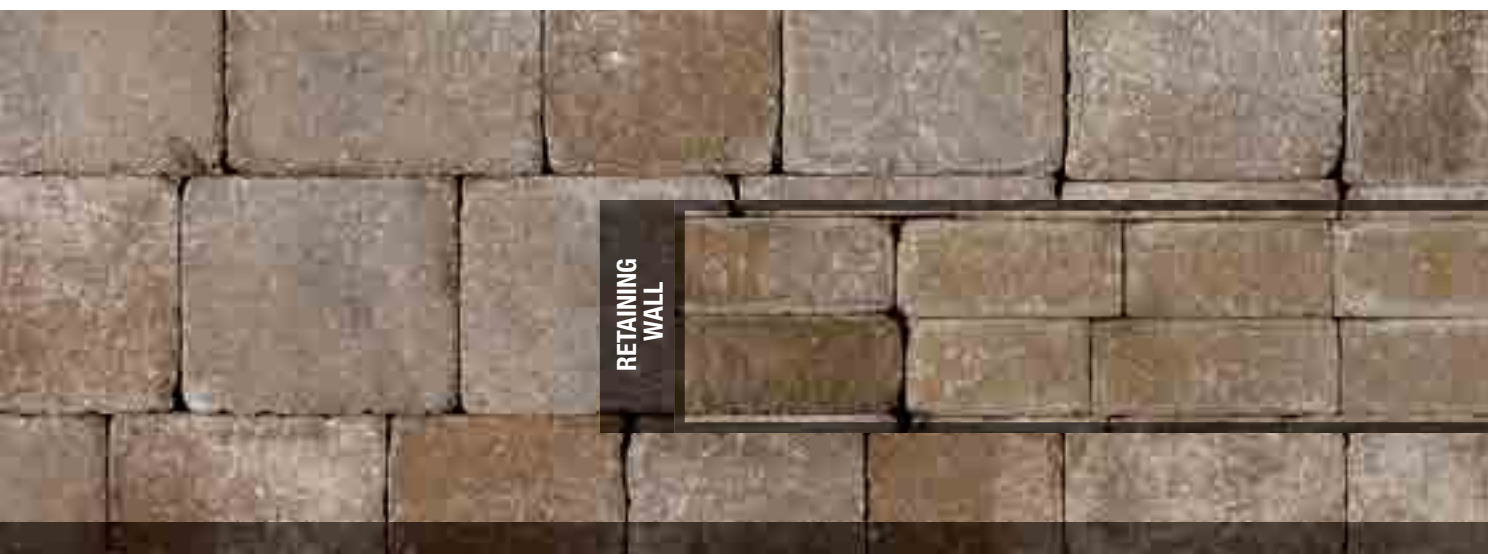
ASH CHARCOAL





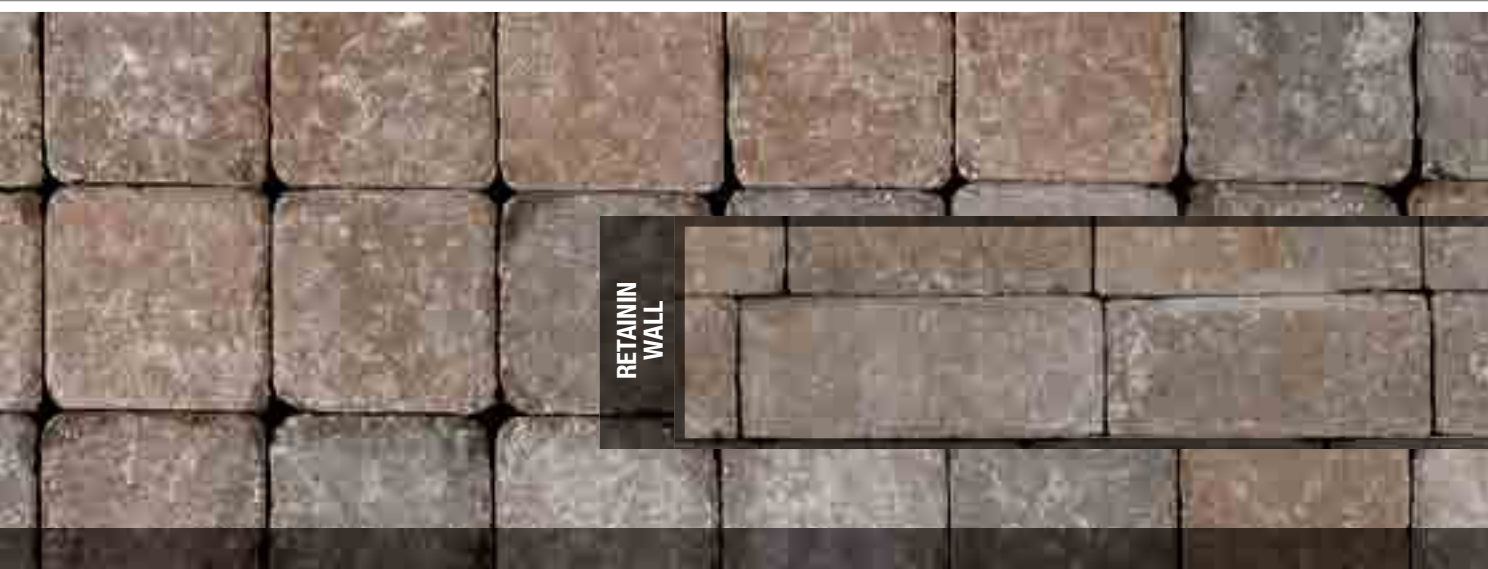
RETAINING
WALL

IVORY BEIGE



RETAINING
WALL

MOROCCO BEIGE



RETAININ
WALL

PALAZZO TX

TECHNICAL DETAILS

Palazzo Modulo

All sizes are packaged together on one skid

120 Sq.Ft. / skid



2 3/8" x 6" x 3"

2 3/8" x 6" x 6"

2 3/8" x 6" x 9"

2 3/8" x 6" x 12"

Palazzo 9

Each size is packaged on individual skids



2 3/8" x 9" x 9"
112,5 Sq.Ft. / skid

2 3/8" x 12" x 12"
120 Sq.Ft. / skid

Available texture



Rippled

Available colors: Panama Beige, Ivory Beige, Morocco Beige, Burgundy Wine, Ash Charcoal, Milton Grey

Suggested Proportions

15% Palazzo 9x9 / 5% Palazzo 12x12 / 80% Palazzo Modulo

BOLERO

All sizes are packaged together on one skid

120 Sq.Ft. / skid



2 3/8" x 6" x 5"

2 3/8" x 6" x 6"

2 3/8" x 6" x 7"

2 3/8" x 6" x 8"

Available texture



Smooth

Available colors: Panama Beige, Ivory Beige, Morocco Beige, Burgundy Wine, Ash Charcoal, Milton Grey

RIBERA

Toutes les grandeurs sont emballées ensemble sur une palette

All sizes are packaged together on one skid

126,4 Pi.Ca. | Sq.Ft. palette | skid



2 3/8" x 5 1/2" x 4 3/4"

2 3/8" x 5 1/2" x 6 5/8"

2 3/8" x 5 1/2" x 7 7/8"

2 3/8" x 5 1/2" x 9 3/8"

Available texture



Rippled

Couleurs disponibles: Beige Panama, Beige Maroc, Rouge Mistral, Charbon Cendré, Gris Milton, Champagne

Available colors: Panama Beige, Morocco Beige, Burgundy Wine, Ash Charcoal, Milton Grey, Champagne

BELAIR TX

All sizes are packaged together on one skid

Packaged separately



3 1/8" x 9 3/8" x 4 5/8"

3 1/8" x 9 3/8" x 9 3/8"

3 1/8" x 9 3/8" x 14 3/16"

New TX finish
86 Sq.Ft. / skid

Belair 14

3 1/8" x 14" x 14"

Tumbled or TX finish
81,6 Sq.Ft. / skid

Available texture



Rippled

Available colors: Panama Beige, Morocco Beige, Burgundy Wine, Ash Charcoal, Milton Grey, Champagne

PATH STONES

TECHNICAL DETAILS

Japanese Path Stone

1 pc = approx. 30 x 20"
20 units
80 Sq.Ft. per skid

20 different sizes,
each one covers
from 3,7 to 4,3 Sq.Ft



Garden Path Stone

1 pc = approx. 18 x 14"
60 units per skid

18 different sizes



Nevada Path Stone

2" height
96 pcs per skid

1 piece = 1.7 sq.ft. approx.



SLATE

Each size is packaged on individual skids

Tile

5 sizes



1" x 8" X 8"
1" x 8" X 16"

1" x 8" X 32"
1" x 32" X 24"

1" x 24" X 24"

Step

4 sizes



1 x 16 x 23"
1 x 16 x 23 3/4"
1 x 16 x 29 1/4"
1 x 16 x 31 3/4"

Available texture



TILES

Diamond



Grey

1 3/4" x 16" x 16"
1,78 Sq. Ft unit | 72 units skid

Atlantic



Grey

Red & Black

1 3/4" x 16" x 16"
1,78 Sq. Ft unit | 72 units skid

WALLS



Talus

6" x 12" x 8"
6" x 12" x 4"
3 pcs : 1 Sq. Ft
20 Sq. Ft / skid
60 units / skid



Montana

4" x 8" x 9"
160 pcs / skid



Garden

4" x 8 1/2" x 12"
3 pcs : 1 Sq. Ft
40 Sq. Ft / skid
120 units skid

BORDERS



Universal 8"

8" x 3 1/8" x 39"

Econo 5"

5" x 3 1/8" x 39"



Radius

8" x 3 1/8" x 39"

90° Corner

8" x 3 1/8" x 12"



Zebra

Length: 95.5"
Plastic, dark charcoal only

BLOCKS

Rino-Bloc



6" x 11 1/2" x 11 1/2"

Multi-Bloc

9" x 6 1/4" x 12"
40 lbs Block



TREVIA TX

Each size is packaged on individual skids



2 3/8" x 6" x 6"
120 Sq.Ft. / skid



2 3/8" x 6" x 9"
112,5 Sq.Ft. / skid

Suggested Proportions

60% - 6x6" / 40% - 6x9"

Available colors: Panama Beige, Ivory Beige, Morocco Beige, Burgundy Wine, Ash Charcoal, Milton Grey

NORWAY

Each size is packaged on individual skids

Available texture



Non-Tumbled



Norway 60

2 3/8" x 4 1/4" x 8 1/2"

132 Sq.Ft. / skid



Norway 50

2" x 4 1/4" x 8 1/2"

165 Sq.Ft. / skid

AVILA

Sabrina

4 Formats



A : 2 3/4" x 5 15/16" x 2 15/16"

B : 2 3/4" x 5 15/16" x 5 15/16"

C : 2 3/4" x 5 15/16" x 8 15/16"

D : 2 3/4" x 5 15/16" x 11 15/16"

Diana

5 Formats



A : 2 3/4" x 5 15/16" x 2 15/16"

B : 2 3/4" x 5 15/16" x 8 7/8"

C : 2 3/4" x 8 7/8" x 8 7/8"

D : 2 3/4" x 8 7/8" x 11 15/16"

E : 2 3/4" x 11 15/16" x 11 15/16"

Clara

5 Formats



A : 2 3/4 x 5 15/16 x 11 15/16"

B : 2 3/4 x 5 15/16 x 17 15/16"

C : 2 3/4 x 11 15/16 x 11 15/16"

D : 2 3/4 x 11 15/16 x 17 15/16"

E : 2 3/4 x 17 15/16 x 17 15/16"

ARIZONA

A : 2 3/8 x 7 3/4 x 7 3/4

D : 2 3/8 x 15 11/16 x 23 9/16"

B : 2 3/8 x 7 3/4 x 5 11/16"

C : 2 3/8 x 15 11/16 x 15 11/16



REVERSIBLE CIRCLE

All sizes are packaged together on one skid
70,3 Sq.Ft. / skid



2 3/8" x 6 3/8" x variable

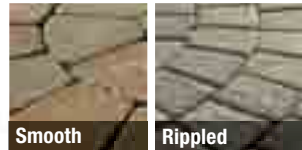
OPTION 1 : 2 circles

1: 3'.8 1/4" diameter 2: 7'.11 1/4" diameter

OPTION 2 : 2 circles

1: 6'.10 3/4" diameter 2: 5'.9 3/4" diameter

Available textures



Smooth

Rippled

Available colors:

Panama Beige, Ivory Beige, Morocco Beige, Burgundy Wine, Ash Charcoal, Milton Grey

BELAIR CIRCLE

All sizes are packaged together on one skid

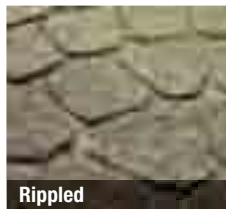
70,3 Sq.Ft. / skid

1 circle ; 8,6 sq.ft (Diameter)



3 1/8" x 9 3/8" x variable

Available textures



Rippled

Available colors: Panama Beige, Ivory Beige, Morocco Beige, Champagne, Ash Charcoal, Milton Grey

PHENIX



A : 2 3/4" x 5 15/16" x 2 15/16"



B : 2 3/4" x 5 15/16" x 8 7/8"



C : 2 3/4" x 8 7/8" x 8 7/8"



D : 2 3/4" x 8 7/8" x 11 15/16"



E : 2 3/4" x 11 15/16" x 11 15/16"

MEGA PHENIX



A : 2 3/4" x 5 15/16" x 11 15/16"



B : 2 3/4" x 5 15/16" x 17 15/16"



C : 2 3/4" x 11 15/16" x 11 15/16"



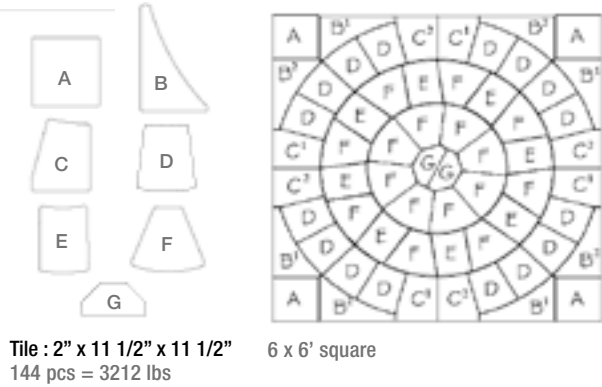
D : 2 3/4" x 11 15/16" x 17 15/16"



E : 2 3/4" x 17 15/16" x 17 15/16"

FAUBOURG

PORTO



SPHERIK

> The sizes listed are all approximative measurements

Each size is packaged on individual skids

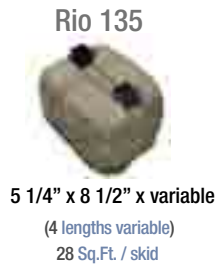
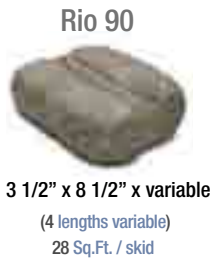


Available colors:
Panama Beige, Ivory Beige, Morocco Beige,
Burgundy Wine, Ash Charcoal, Milton Grey

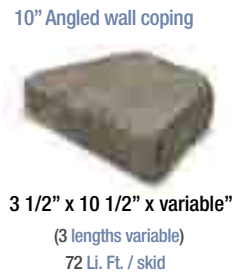
RIO WALL

COPING

Each size is packaged on individual skids



Available colors
Panama Beige
Ivory Beige
Morocco Beige
Burgundy Wine
Ash Charcoal
Milton Grey



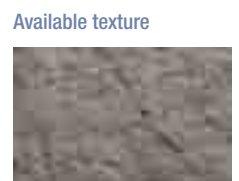
PILLAR

BELMONT

COPING

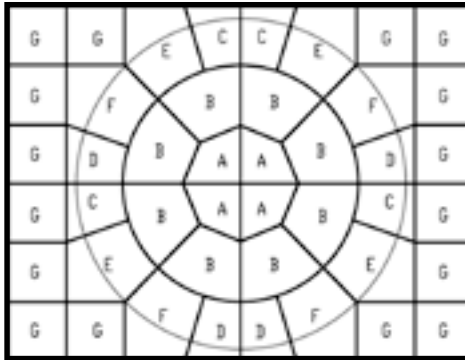


Available colors: Panama Beige, Ivory Beige,
Morocco Beige, Burgundy Wine, Ash Charcoal, Milton Grey



PORTO

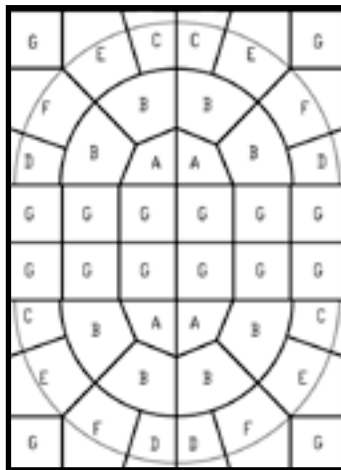
LAY DOWN PATTERNS



PORTO 1

Porto Kit with 12 surrounding tiles

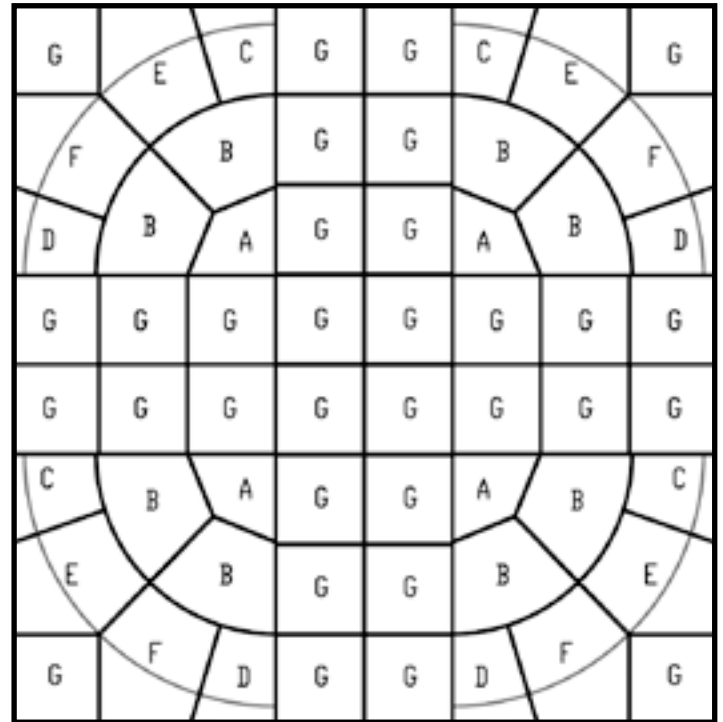
94 x 70.5" = 46 sq.ft



PORTO 2

Porto Kit with 12 tiles in center

70.5 x 94" = 46 sq.ft



PORTO 3

Porto Kit with 28 tiles in center

94 x 94" = 61.4 sq.ft

ACCESSORIES



INVISIBLE STAIN PROTECTOR



EFFLORESCENCE CLEANER

CONCRETE ADHESIVE

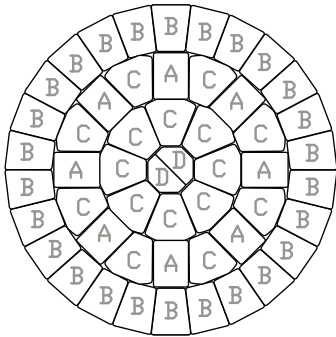


SAND (FOR REGULAR OR LARGE JOINTS)

FOR MORE PATTERNS, VISIT OUR WEBSITE AT: WWW.RINOX.CA

Reversible Circle

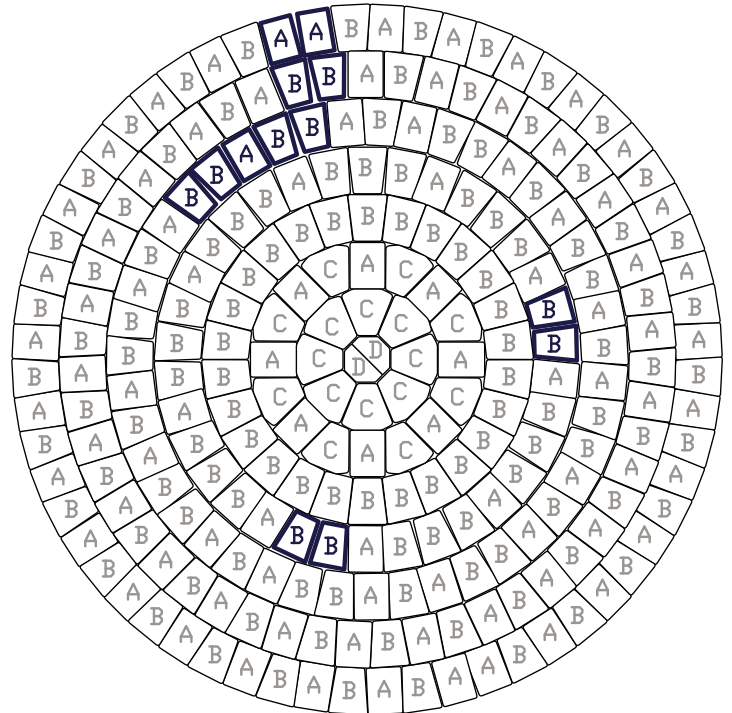
OPTION 1 › 2 CIRCLES



3 RINGS + CENTRE

3' 8 1/4" = 44 1/4" = 1.12m Diameter

Ring	Pieces	Pattern
0	2D	D
1	8C	C
2	8A - 8C	A - C
3	26B	B
4	9A - 25B	A - B - B - B*
5	17A - 26B	A - B - B - A - B
6	25A - 26B	A - B
7	31A - 29B	A - B



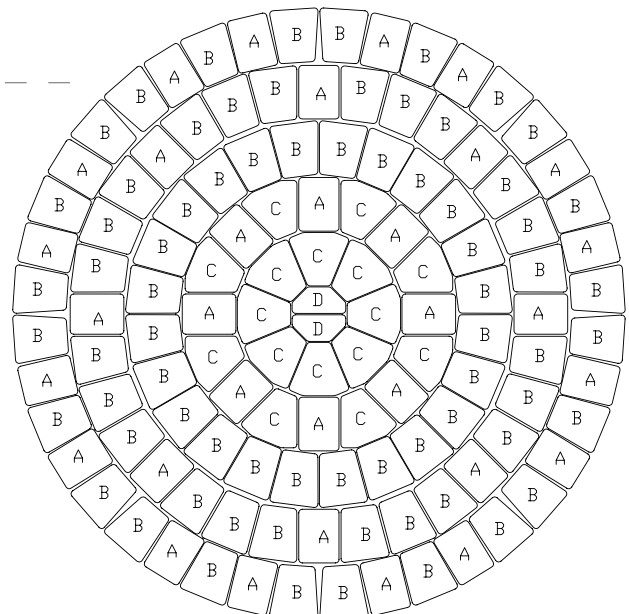
7 RINGS + CENTRE

7' 11" = 95" = 2.4m Diameter

* Some irregularities

Belair Circle

Ring	Pieces	Pattern
0	2	D
1	8	C
2	16	A - C
3	24	B
4	32	A - B - B - B
5	40	A - B - B - A - B



For more information, contact your Rinox representative

PAVER INSTALLATION

1. Excavation

- 1.1 First and foremost, be sure to contact all water, electric and gas utilities to determine the location of any cables, wires or pipes in the area to be excavated.
- 1.2 Be certain that your excavation is on a slant to ensure proper drainage. We suggest a minimum slope of 2 degrees (1 inch for every 8 feet).
- 1.3 The contour of the excavation must exceed the surface to be paved by at least 12". The depth of the excavation depends largely on the composition of your soil. These steps and the use of borders will provide maximal stability.
- 1.4 Level the bottom of the surface using a rake. If the foundation is of sand-based, compact the surface with a plate compactor (jumping jack). If the foundation is clay-based, avoid compacting. Rather, place geotextile fabric between the base and added aggregates in order to prevent the two from mixing together and ensure better stability.



2. Foundation

- 2.1 Spread 0 – 3/4" stone in successive 4" intervals and compact well.
- 2.2 To facilitate compacting and minimize dust accumulation, slightly wet the stone bedding.
- 2.3 It is strongly recommended to pass the plate compactor in a criss-cross pattern a few times to obtain the best possible result.



3. Borders

- 3.1 Place your borders in a row along the entire length where they are to be installed. Install the first unit in a straight line and with a piece of cord, align it to your end point.
- 3.2 In order to minimize paver cuts, place the first row of pavers on the ground in order to determine the starting position of borders on the opposite side.





4. Stone Bedding

- 4.1 The preparation and levelling of the stone bedding is the final step before the installation of the paving stones.
- 4.2 Spread between 5/8" – 1" of crushed stone or concrete sand keeping in mind that the stone bedding will be reduced by 3/8" after the compacting of the installed paving stones.
- 4.3 Level the concrete sand or the crushed stone using two pipes of 1" in diameter and a straight plate. The precision of this levelling will have a direct and important impact on the final result.



5. Paving Stone Installation

- 5.1 Place the paving stones according to the chosen design. Always begin with a 90 degree angle. Be sure to choose paving stones from various skids in order to obtain a more uniform result.
- 5.2 Due to the raw materials used and the manufacturing process, there may be a slight variation in colour from skid to skid. Verify the alignment at every row and make adjustments as needed.
- 5.3 Should you need to make cuts, use a mini-guillotine or cement saw. The use of security goggles is recommended when cutting. Cuts should be lightly slanted inwards in order to place the pavers with greater ease. Stone cutting should not be done in proximity to installed pavers.
- 5.4 Upon completion of paver installation, it is suggested to spread a very fine sand on the entire work surface before compacting with a vibrating plate in a criss-cross pattern. In order for the surface to be uniform, it is important that the pavers be embedded solidly into the stone dust or cement sand.
- 5.5 After passing the vibrating plate, lightly wet the sand left on the paver surface and using a broom, sweep the sand into the joints.
- 5.6 Left-over sand and paving stones should be kept in case of need at a later date.



Tile Installation

Follow the same installation steps as the paving stones,
EXCEPT DO NOT USE THE VIBRATING PLATE ON TOP OF THE TILES.

RETAINING WALL INSTALLATION

1. Excavation

- 1.1 Dig a trench approximately 12" deep by 20" wide.
The exact width will depend on the actual depth of the chosen retaining wall system.



2. Foundation

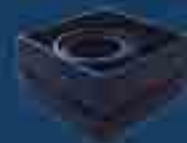
- 2.1 Cover the bottom and sides of the trench with the proper geotextile fabric to avoid drainage problems. The geotextile fabric should exceed the height of the wall by approximately 12" so that it will fold onto the 3/4" clear stone behind the wall to be built.
- 2.2 It is strongly recommended to use a 4" drainpipe to be installed within your foundation and connected to your existing drainage system.
- 2.3 Lay 0 - 3/4" stone and spread out evenly to a depth of 6" using a rake.
- 2.4 Compact the surface using either a vibrating plate or jumping jack.



K-Block

The K-Block should not be used to support the wall in any way

Straight wall



5° angled wall



10° angled wall



RETAINING WALL INSTALLATION

THESE ARE COMMON INSTALLATION PROCEDURES. DEPENDING ON YOUR PROJECT CRITERIA, WE SUGGEST YOU CONTACT A LANDSCAPING PROFESSIONAL.



3. Installation

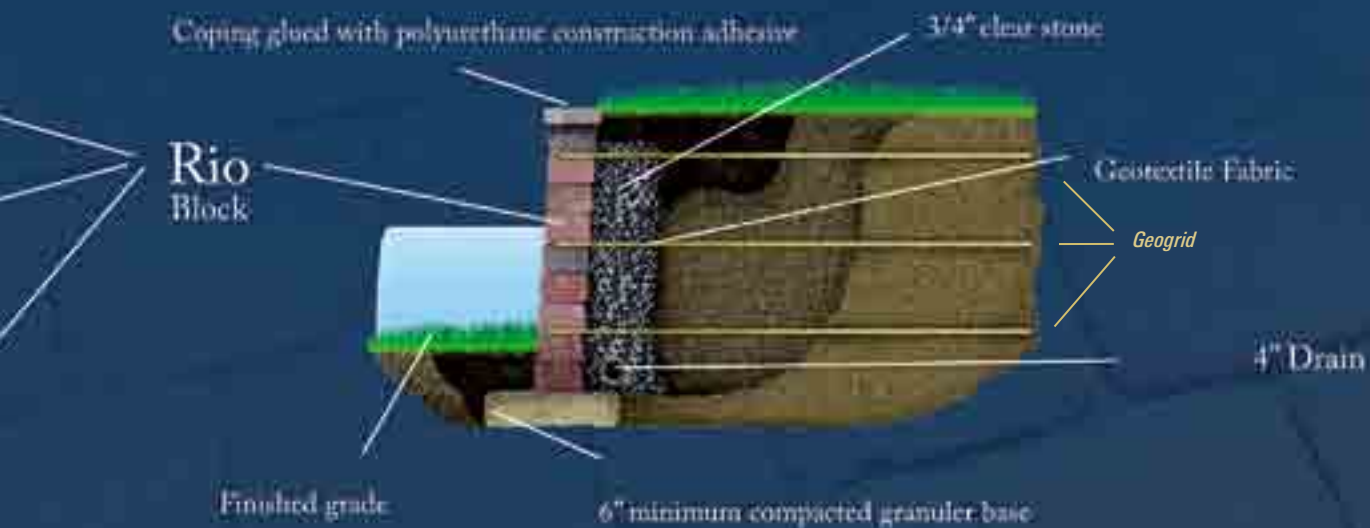
- 3.1 Install the first row of blocks along the entire length. Ensure that it is solid and level. This row should be beneath the visible surface and will serve as a sturdy base for the remainder of the wall.
- 3.2 Fill the void behind the installed row of blocks with 3/4" clear stone and compact it lightly
- 3.3 Subsequently install the second row of blocks so that a running bond pattern is achieved. This is done by installing different sized blocks on the Rio systems.
- 3.4 Continue installing the blocks, and filling the void behind the wall every 8" with 3/4" clear stone.



4. Finishing Touches

- 4.1 If the retaining wall system you have chosen includes capping units, place these on the last row of blocks and use concrete adhesive to glue them together.
- 4.2 You can then proceed to repairing any grass on the ground along the wall you have built.

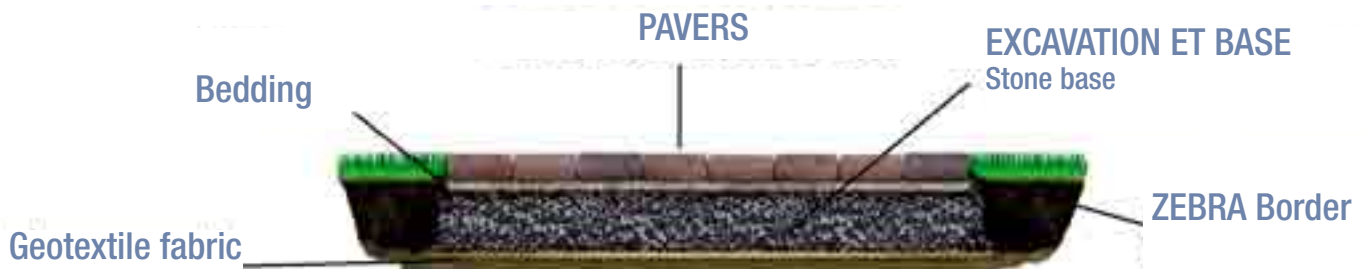
Do not exceed 3 feet in height without the approval of an engineer



Note: These are common installation procedures. Depending on your project criteria, we suggest you contact a landscaping professional.

VISIT OUR WEBSITE AT: WWW.RINOX.CA

SAND AND SOIL



Driveway



Walkway

WIRE:	DRIVEWAY:		PATIO / WALKWAY:	
	Clay	Sandy	Clay	Sandy
Excavation:	18"	11"	9"	2"
Foundation (1/2" 3/4"):	12"	8"	6"	4"
Bedding:	1/2" - 1" Sand or stone dust			
Paver thickness:	50-60-80 mm / 1 1/2"-2 1/2"-3 1/2"			



NO MORE WEEDS!



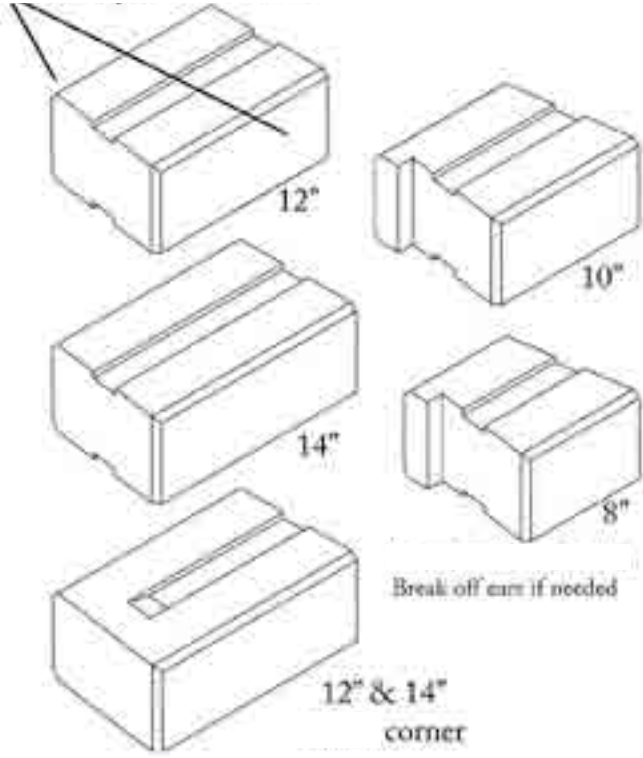
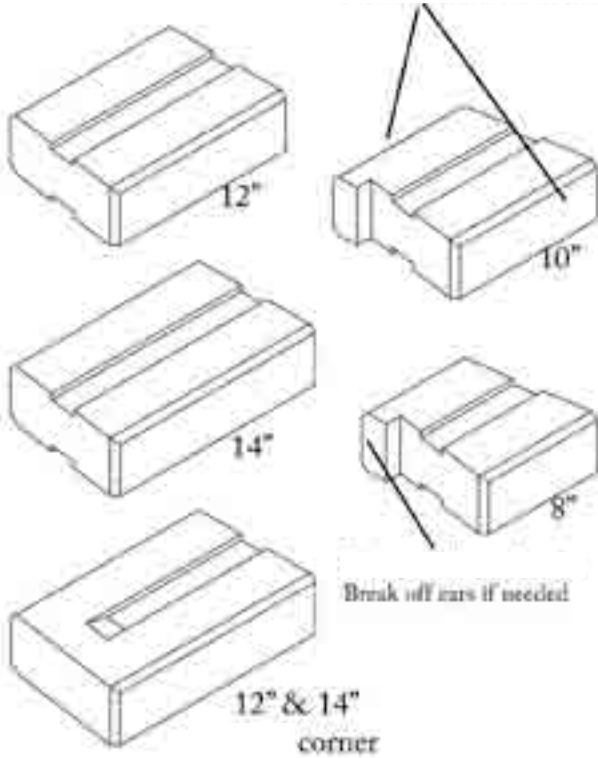
- 1) Before applying the sand, ensure that the surface of the pavers is dry.
- 2) Apply sand liberally over the surface of the pavers and brush the sand into the joints. Compact the surface and repeat the brushing procedure. (To obtain better results, use a vibrating plate to compact the surface of the pavers.)
- 3) Remove excess sand with a broom so that the level of the sand is slightly lower than the pavers.
- 4) Apply a fine mist of water 2 or 3 times, with a duration of the product at 5 to 10 minute intervals. Avoid over-saturating or flooding of the joints with the water as this will adversely affect the final result.
- 5) Allow the sand to dry for at least 4 hours, before any maintenance, pedestrian or vehicular, is permitted on the surface.

LAY DOWN PATTERNS

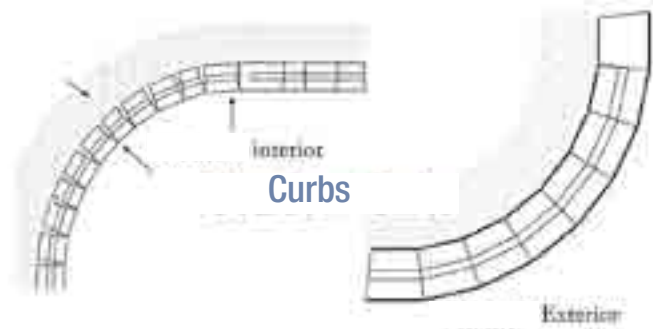
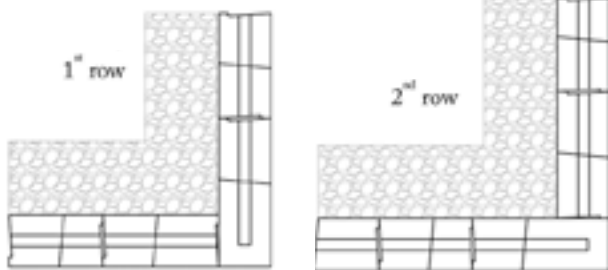
RIO 90

RIO 135 MODULES

2 sided split faced finish



Corners





**SEND US YOUR PICTURE AND RECEIVE
A PROMOTIONAL GIFT FROM RINOX**

ENTER: Send us an email to photo@rinox.ca and put PHOTO as the subject. Please include your name, telephone number, address and the name(s) of the Rinox product(s) installed. We will contact you to schedule a date so that we may come admire your home !



Financing

Your project will definitely increase the value of your property. If you wish to finance this investment in your property, our financial partner can help, no matter the extent of your project. They will find a solution according to your needs, allowing you to spread out your payments over a period that suits your budget.

Contact us!
Montreal area : 514 990 9377
Canada : 888 855 9999
info@rinox.ca



Distributors

CANADA

Québec

Fillion Briques et Pierres
Alma
418 347-3333

Pavé Briquesdesign
L'Assomption
450 589-8666

Trévi
Blainville
450 435-5523

Trévi
Boucherville
450 449-2411

Déco Jardin
Brossard
450 656-4735

Laferté Ltée
Drummondville
819 477-8950

Les Entreprises Delorme
Drummondville
819 850-1600

Matério
Laplaie
450 478-7557

JF Faucher
Laprairie
450 659-2222

Dépôt Bloc
Laval
450 668-PAVÉ

Jardins Zeillinger
Laval
450 627-7000

Trévi
Laval
450 973-1249

Leeroc Briques et Pierres
Mascouche
450 474-7888

Centre du Pavé
et Jardin RDP
Montréal
514 494-7880

BMR Groupe Yves Gagnon
Mont-Tremblant
819 425-8771

Centre de Rénovation
Dynaco BMR
Rivière-du-Loup
418 862-9316

Laferté Ltée
Sainte-Hyacinthe
450 733-9256

Matério
Saint-Jérôme
450 438-3577

Québec Brique et Pierre Inc.
Saint-Lambert de Lauzon
418 889-8888

JL Briques et Pierres
Saint-Luc
450 348-5389

LC Design Briques
et Pavés Inc.
St-Mathieu-de-Beloeil
450 281-1226

Béton St-Louis
Trois-Rivières
819 379-5624

Art-Deco Stone
Vaudreuil-Dorion
450 455-8963

CERTAINS PRODUITS DISPONIBLES
CHEZ LES MAGASINS SUIVANTS:
SELECTED PRODUCTS ARE AVAILABLE
AT THE FOLLOWING STORES:

BMR;
Rona;
Rona Marcil;
O. Coderre & Fils;
Laferté Ltée;
Matério;
Les Entreprises Nova

Alberta

Trévi
Calgary
403 698-8485

Nouvelle-Brunswick (NB)

Alexandre Pavers and Stone
Dieppe
506 850-4222

Nouvelle-Écosse (NS)

The Stone Depot
Bayers Lake Halifax
902 832-2260

Bergman Concrete
Bedford
902 832-0506

Ontario

Builders Warehouse
Orleans
613 824-2702

USA

Haynes Materials
Deep River, CT
860 526-4129

Connecticut Masonry
& Construction Supply
Waterbury, CT
203 597-9131

Haynes Materials
Oxford, CT
203 888-0030

Haynes Materials
Seymour, CT
203 888-8177

Southbury Stone
and Supply
Southbury, CT
203 264-1118

Merwin Mason Supply
South Windsor, CT
860 289-4297

Haynes Materials
Torrington, CT
860 496-7070

Cedar Mountain
Stone and Mulch
Wethersfield, CT
860 563-9200

Hillcrest
Landscape Supply
Sagamore Beach, MA
508 888-0004

Landscape Express
Salisbury, MA
781 933-0716

Ross Blacktop
Brick & Paving
Ballston Spa, NY
518 858-3385

Green Scapes Inc.
Jamesville, NY
315 469-0007

County Line
Mason Supplies
Huntington Station
Long Island, NY
631 271-6679

Early Riser
Plattsburgh, NY
518 561-2855

Contractors Market
Ridge, NY
631 205-9758

Birch Mountain
Earthworks
South Windsor, CT
860 289-1656

rinox.ca



CANADA

3200 Boul. des Entreprises
Terrebonne, Qc,
Canada J6X 4J8
Téléphone: 450-47-RINOX
Fax: 450-477-0999

U.S.

23 Quarry Road
Douglassville, PA 19518
Phone: 610-323-6600
Fax: 610-323-6601

RINOX LIFETIME WARRANTY

Rinox offers a lifetime warranty for all its concrete products provided the initial customer is the owner of said products and that the products are used and installed according to standard building codes and Rinox installation guidelines and specifications. The Rinox lifetime warranty is provided to the original owner with proof of purchase and is non-transferable. It is applicable solely on Rinox products and excludes all labour and installation fees. If it is determined that a product is covered under warranty, Rinox will replace the product only (excluding all labour). However, Rinox will not process a claim if the quantity installed exceeds one hundred (100) square feet. There are no warranties or guaranties, expressed or implied, of any nature whatsoever, including without limitation, any implied warranty of merchantability or fitness for a particular purpose with respect to this product.

Use of the product constitutes product and color acceptance. The customer is encouraged to pick and install from multiple skids under the same lot to insure proper color dispersion.

Rinox produces its concrete products from natural materials and slight variations in color may occur; therefore Rinox is not responsible for any variation in color. Efflorescence (small white crystals that may form on the surface of concrete products) is a naturally occurring process that dissipates over time. Chemicals (except Muriatic Acid) can accelerate the aging process, however natural weathering is recommended.

While our Majeska product line (Alternative Masonry products, Lugano Stone, Ardoise Tile & Step, Japanese Stone and Garden Stone) does conform to the latest Canadian and U.S.A. standards, we do not suggest the use of sodium chloride on such products.

IMPORTANT NOTE: COLOR

The colors of the products shown in this brochure are as accurate as the photographs and printing process will allow. We strongly recommend that you make your final color selection based on an actual product sample rather than on the photographs shown here.



Association des manufacturiers
de maçonnerie de Béton
Centre de recherche sur les Pavés



L'ASSOCIATION
DES ENTREPRENEURS EN
MAÇONNERIE DU QUÉBEC



ASSOCIATION QUÉBÉCOISE
DES ENTREPRENEURS EN
CONSTRUCTION DU QUÉBEC

Authorized Distributor